

MPanel v12 releasing soon!

MPanel v12 is due for release in early November. If you hold a current MPanel Technical Support Contract this new update will be sent to you automatically.

If your contract has lapsed, please [contact us](#) for help in reinstating your contract. If you have previously evaluated **MPanel** and would like to see the newest features, please do let us know, as the evaluation version of **MPanel v12** will be available soon after the permanent version is shipped to our current customers.



MPanel v12 has new features in the following areas:

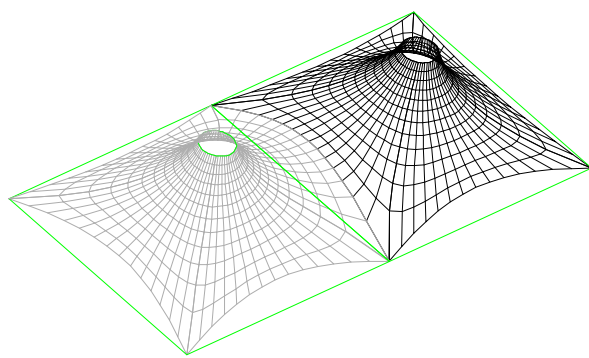
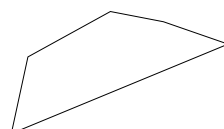
- **Model Builder**
- **Relaxation engine**
- **Paneling**
- **Seam types**
- **Output to plotter**
- **Toolbar and Option screen layout**

Here are some examples of the new features:

Model Builder now draws polylines from XYZ.

Will draw a 3DPoly based on a set of coordinates from the clipboard. The coordinates can be copied from a text document or from a spreadsheet. They can be in XY or XYZ columns. The tool can be applied several times, to build up a the outline of a complete 3D model from a list of system coordinates

25	10	0
53.1	151	37.8
190.3	235	37.8
278.4	216	64.8
385.4	174.3	37.8
25	10	0



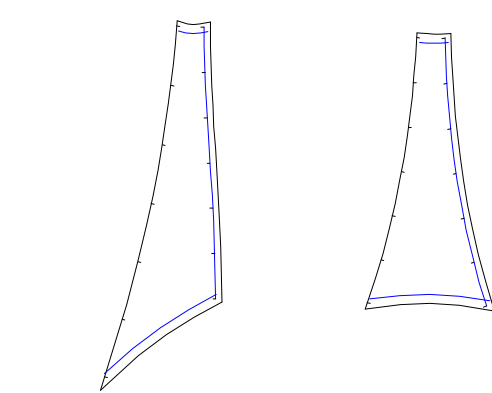
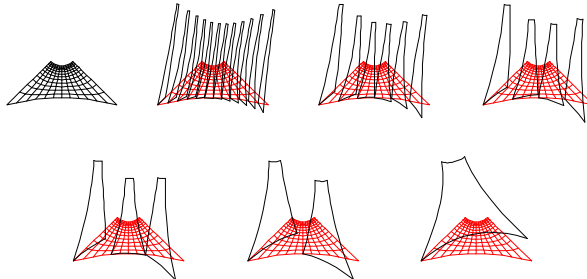
Model mirroring

You can set the model to mirror the local forces on an edge which produces the same shape as if the whole model was mirrored.

This is useful if you are working on a large symmetrical model, as you don't have to draw or relax "the other half" of the model.

Set the number of panels you want from a mesh.

You can now set the numbers of panels that are drawn from each mesh. The tool will accept a number of panels that can be derived from the mesh... so a mesh with 12 panels can be paneled as 6,4,3,2, or 1.



Seam Allowance Options

You can now define what type of seam you need on each side of the panel, including lap-over, lap-under, fold-to, butt, etc.

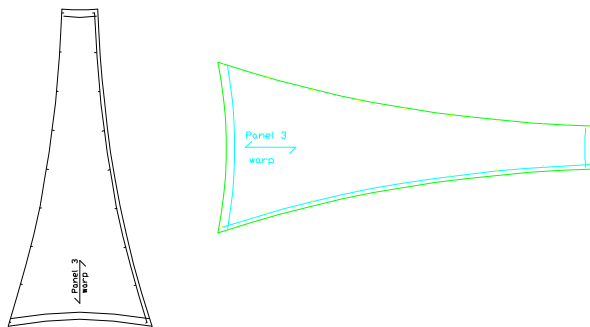
Here we show the right panel overlapping the left; with the top and bottom folded to a guideline, with lineup marks added.

New Output Options

On the panel output the panel entities are now separated onto different layers for output to the plotter. By default their layers are:

Cut Curve=C
Annotation lines, curves and text = A
Lineup marks = D (drill)

This change is for compatibility with the AAMA dxf specification for output to cutter plotters.




Remember the IFAI Expo 2006

Your MPanel Support Team will, once again, be on hand at the IFAI to answer any questions about MPanel. This year the Expo will be held in Atlanta, GA from Oct 30-Nov 2. Please stop by **Booth #1700** and let Andrew and Timothy show you how fast and easy it is to design your tensile fabric structures using our MPanel software.

Get your free 30-day MPanel Evaluation

If you haven't yet tried MPanel, please do contact us and we will send you a free, fully functional, evaluation copy of MPanel to try out in your own design environment. We will even hold a training web conference with you to get you started! To request this MPanel evaluation please send us an email with your company contact information to support@mpanel.com.

You can also contact us through  Just search for MPanel Support and choose the representative that is closest to you.

US and Americas contact:

Timothy Akes
CAD Effects, LLC
10805 Sunset Office Drive, Ste 300
St. Louis, Missouri 63127 USA
(314) 631-6300 voice
(314) 754-9388 fax
takes@cadeffects.com

Australia contact:

Alan Stewart
Structureflex
280 Bay Road
Cheltenham, 3192 Victoria, AU
(03)9581 6150 voice
(03) 9581 6177 fax
alan@structureflex.com.au

UK, Europe and Asia contact:

Andrew Askwith
Meliar Design
Lower Cwm Barns
Llanafan Fawr, Builth Wells,
Powys, Wales, UK LD2 3SG
+44 (0)1597 860291
andrew@meliar.com