

MPANEL NEWS

Form-finding and patterning software for AutoCAD

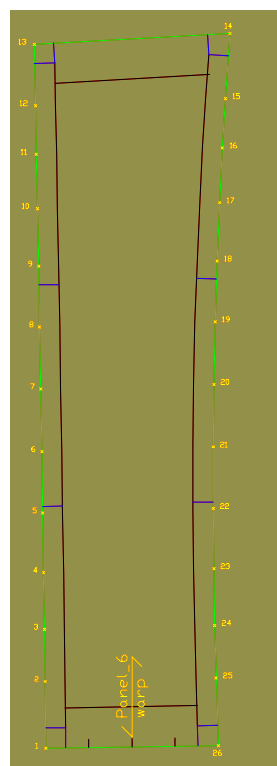
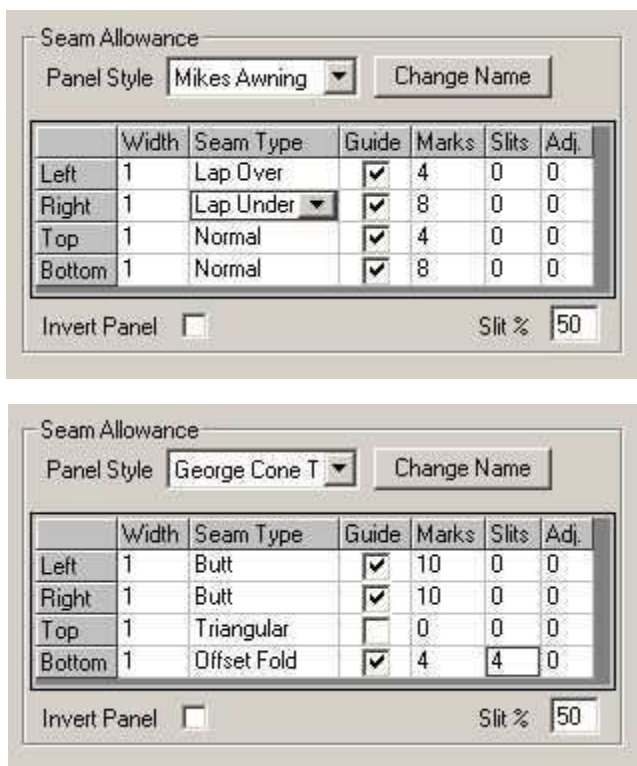
December 2007




Are You Using All of the New Features in MPanel v12.5?

MPanel v12.5, released in August 2007, is one of our most extensive upgrades ever! 12.5 includes exciting new features for production such as much improved seaming options (shown at left), even allowing you to save named seam styles for use again and again. And panels can now be broken into 5 different layers to enable easier output to your printer or plotter (shown at right).

Also, the ability to add grid lines for graphic placement is a long awaited improvement, and has been especially welcomed by our exhibition manufacturing customers!



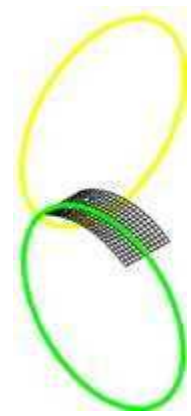
MPanel 12.5 Refresher Course

If you are an MPanel user with a current Support Contract, we will give you a refresher course, conducted via interactive web conferencing.

We want our customers to use MPanel to their best advantage, so we will show you how the latest features in MPanel can expedite your design and manufacturing process.

Just [contact us](#) to set up a training session!

Fabric Pre-Stress Determination



We have posted a new AutoCAD drawing on our website to help you determine which fabric you need to use for your tensile structure.

This example takes a simple shape and looks at how the fabric stress is affected by wind and snow loads.

It provides an estimate of the required fabric pre-stress, and so provides the information needed to select a suitable material.

Just go to our [Tutorials](#) page on our website at www.mpanel.com. There you will find tutorial drawings from the most basic features of MPanel, through to more advanced functions.

MPanel Support Team ... second to none!

Our aim is to have the best Support Team on the planet! With Support Team members in 3 countries, we will answer your questions more quickly than many 'big' companies.

Be sure you are using all of our Support Team advantages. Most of you know Timothy Akes in the US, Alan Stewart in Australia, and Andrew Askwith in the UK, who are our all important Design Support Team members. But you may not realize that our fourth Support Team member, Barbara Derrick, is here to help with all of your administrative needs. If you have lost your registration details, if you would like an evaluation copy of MPanel, if you want to renew your Support Contract, or if you would like to be included on the [MPanel User Profiles](#) page on our website, Barbara is here to help you.

So when you have a support issue of any kind, please use our Support Team email, support@mpanel.com. Using this email address assures you of the quickest response, wherever you are in the world!

IFAI Expo Workshops... a great success!

The CAD Design Workshops, presented by MPanel personnel Timothy Akes and Andrew Askwith, were a great success in Las Vegas at the annual IFAI Expo.

We would like to say 'thank you' to all of you who participated, and also 'sorry' to all who wanted to attend, but couldn't due to limited numbers. We had 3 lively sessions, with forty participants per 2 hour session.

If you attended one of the workshops and have questions about the presentation or any aspect of MPanel, please do [contact us](#). If you failed to pick up an evaluation copy of MPanel v12.5, do let us know and we will gladly send you one by email.

If you didn't attend, but would like to see how MPanel can improve productivity in your design team, just contact us for an evaluation of MPanel. We are always happy to answer any questions you may have.

Upcoming Industry Events - January-February, 2008



2008 MFA National Convention - January 13-25, 2008
Marriott Hutchinson Island Resort Stuart, FL
www.marinecanvas.com



The Special Event - January 15-18, 2008
Georgia World Congress Center Atlanta, Georgia
www.thespecialeventshow.com



IFAI Tent Conference 2008 - January 24-26, 2008
Hyatt Hotel Long Beach, CA
www.tentexperts.org



NECPA 12th Annual Frank Johnson Conference and Expo - January 24-26, 2008
MassMutual Center Springfield, Massachusetts
www.necpa.org



Canvas Products Association Tri-Zone Convention - Jan 30-Feb 1, 2008
Millennium Hotel St. Louis, Missouri
www.canvaszone7.com



2008 Mid-Atlantic Region 22nd Annual Convention - February 7-10, 2008
Doverdowns Hotel and Casino
Dover, Delaware
www.cmcfaw.org

US and Americas contact:

Australia contact:

UK, Europe and Asia contact:

Timothy Akes
CAD Effects, LLC
10805 Sunset Office Drive, Ste 300
St. Louis, Missouri 63127 USA
(314) 631-6300 voice
(314) 754-9388 fax
takes@cadeffects.com

Alan Stewart
Structureflex
280 Bay Road
Cheltenham, 3192 Victoria, AU
(03)9581 6150 voice
(03) 9581 6177 fax
alan@structureflex.com.au

Andrew Askwith
Meliar Design
Lower Cwm Barns
Llanafan Fawr, Builtl Wells,
Powys, Wales, UK LD2 3SG
+44 (0)1597 860291
andrew@meliar.com