

MPanel is the form-finding and patterning software for AutoCAD and Rhino

In this issue:

- MPanel v14.5 releasing in March 2010
- MPanel-R FEA for Rhinoceros
- Compatibility
- Nesting module

MPanel v14.5 releasing in March 2010

All customers with a current technical support agreement will automatically receive this update at no additional charge.

Some of the new features:

Insert 3D Detail

Takes a flat .dxf drawing, and scales it linearly and angularly for inserting into a 3D drawing. Useful for adding corner plates, etc.

Parametric Modeling

Will build pre-defined models from a library with user supplied parameters.

Panel from Entities

Allows MPanel to use any 2D entities to make a panel that can be carried through the production phases of MPanel, such as seam allowances, node marking, etc

Add-on module for Nesting

Full nesting capabilities now available as an option.

Parametric Modeling

Our parametric modeling feature was offered as an interim update to customers in December, 2009. This feature is now included in all releases.

Models can be used as is, altered in your CAD program, or used as building blocks for a larger structure.

Parametric modeling includes pre-defined models for:

Awnings

Barrel Vaults

Cable Tents

Hypars

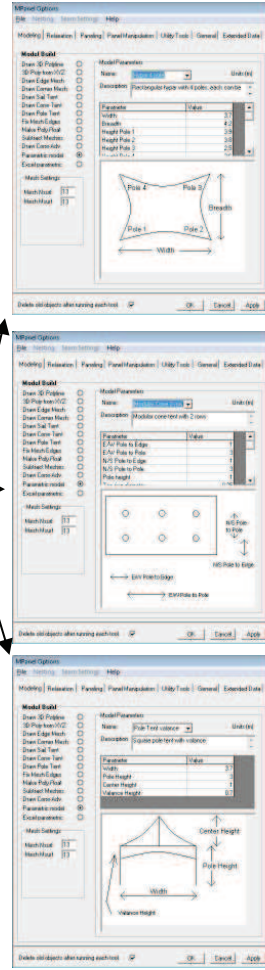
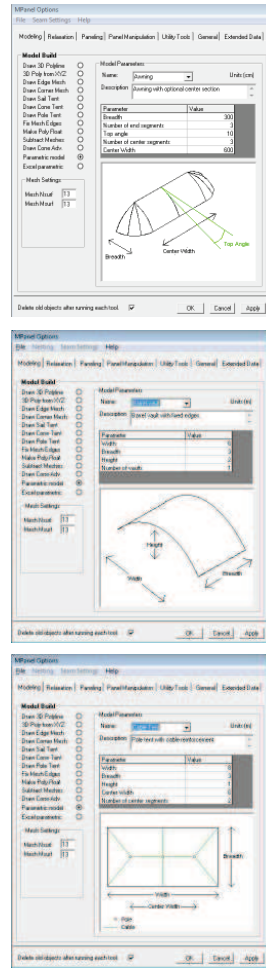
Modular Cone tents

Pole Tents with Valances

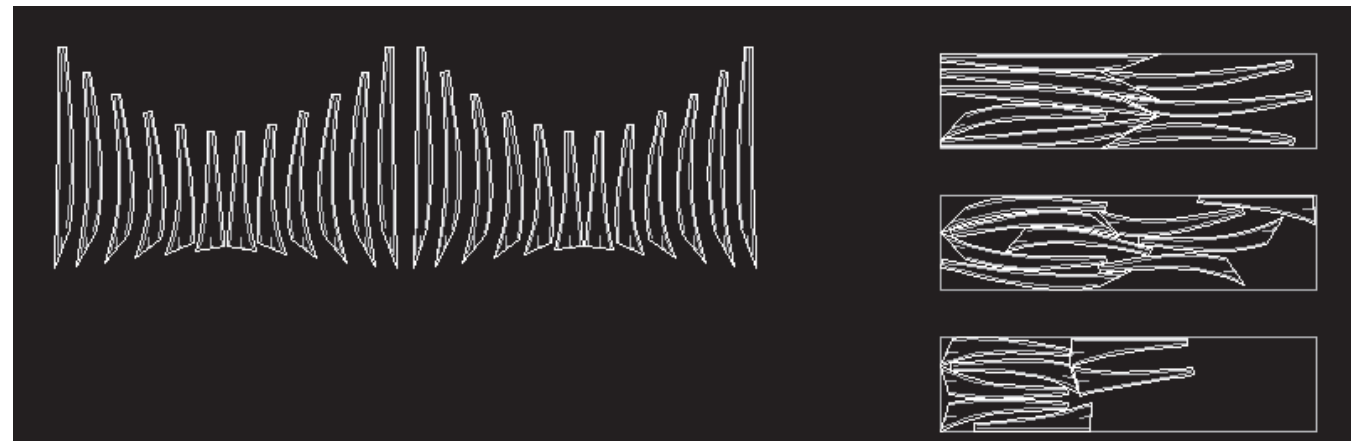
You can also build a model from an Excel spreadsheet using the new 'Excel Parametric' feature.

Allows calculation of the build parameters, and calculation of additional results such as covered area, etc.

These parametric modeling options, allow you to get started quickly with your CAD drawing, and then alter it to fit your needs.



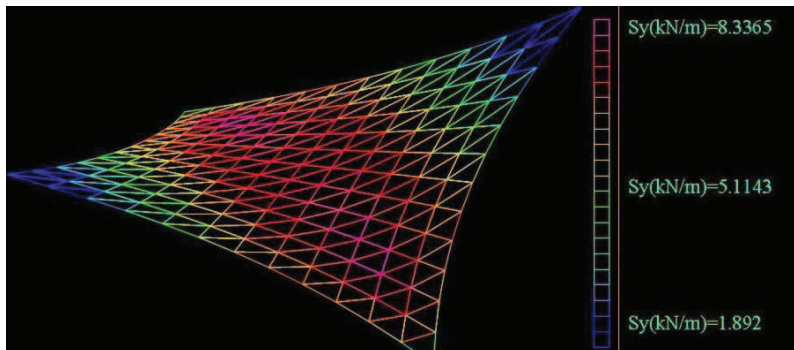
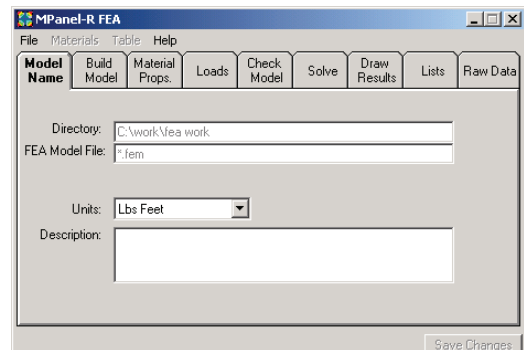
Nesting with MPanel



For those who need it, an optional nesting library has been added to MPanel. There is an additional cost for this feature.

This performs a full nesting of MPanel panels into any number of table sized sheets. The allowable warp direction change during nesting can be specified. A report is issued showing the sheet utilization.

MPanel-R FEA for Rhinoceros



Last years release of MPanel for the Rhinoceros 3D platform was certainly a popular option for many of our clients, so we are pleased to announce that MPanel-R FEA, our Finite Element Analysis application, is now fully compatible with Rhino as well! This means that all of the MPanel suite of products are now available for either the AutoCAD or Rhino platforms, giving our customers a choice of which the these popular CAD systems best fit their particular needs.

MPanel Compatibility - Our Commitment to New Technology

At MPanel, we are continually testing our software against all new platforms and operating systems (32 bit and 64 bit) in an effort to keep our customers working!

We can confirm that all MPanel products have been fully tested and are completely compatible with Windows XP, Windows Vista, and Windows 7. Testing has also been completed on AutoCAD 2010 and Rhino 4 SR7. We are now in the process of evaluating compatibility with the beta release of AutoCAD 2011 and Rhino 5 and will publish those findings soon.

Technical Tip - Turn off AutoCAD's Selection Preview Effect

With the release of AutoCAD 2009, a new feature called the "Selection Preview Effect" was introduced. This feature auto-highlights & dashes any object that you might mouse over. While this can be a helpful feature for basic drafting uses, many MPanel users (including us!) find it annoying, and even non-productive. With MPanel's intensive use of meshes, even the most powerful machines can slow down to a crawl. To disable this effect in AutoCAD, go to the TOOLS dropdown and choose OPTIONS. Locate the SELECTION tab where you can find the Selection Preview options. Un-checking both boxes in this section will disable the effect and allow an MPanel user to work unhindered with meshes.

As always, please feel free to [contact us](#) with any questions that may arise as you use MPanel. Our friendly Technical Support Team members are available to answer your questions in a timely manner.

US and Americas:

Timothy Akes
CAD Effects, LLC
 10805 Sunset Office Drive, Ste 300
 St. Louis, Missouri 63127 USA
 (314) 631-6300 voice
 (314) 754-9388 fax
takes@cadeffects.com

Australia:

Alan Stewart
Structureflex
 280 Bay Road
 Cheltenham, 3192 Victoria, AU
 (03)9581 6150 voice
 (03)9581 6177 fax
alan@structureflex.com.au

UK, Europe and Asia:

Andrew Askwith
Meliar Design
 Lower Cwm Barns
 Llanafan Fawr, Cwm Wells
 Powys, Wales, UK LD2 3SG
 +44 (0)1597 860291
andrew@meliar.com

We are Members of:

